

Nurse Practitioner Program – Placement Algorithm
Primary Health Care – Global Health Stream

Practicum placements for students in the PHC-GH program include placements in Community Health Centres (CHC), Family Health Teams (FHT), outpatient clinics, long-term care, palliative care, aboriginal centres, ambulatory care centres (e.g., urgent/emergency departments, primary care clinics), community-based facilities (e.g., public health, occupational health, correctional services), and stable patients in hospital settings. Students will not complete placements in critical care areas such as ICU, PACU, CCU, and CVICU.

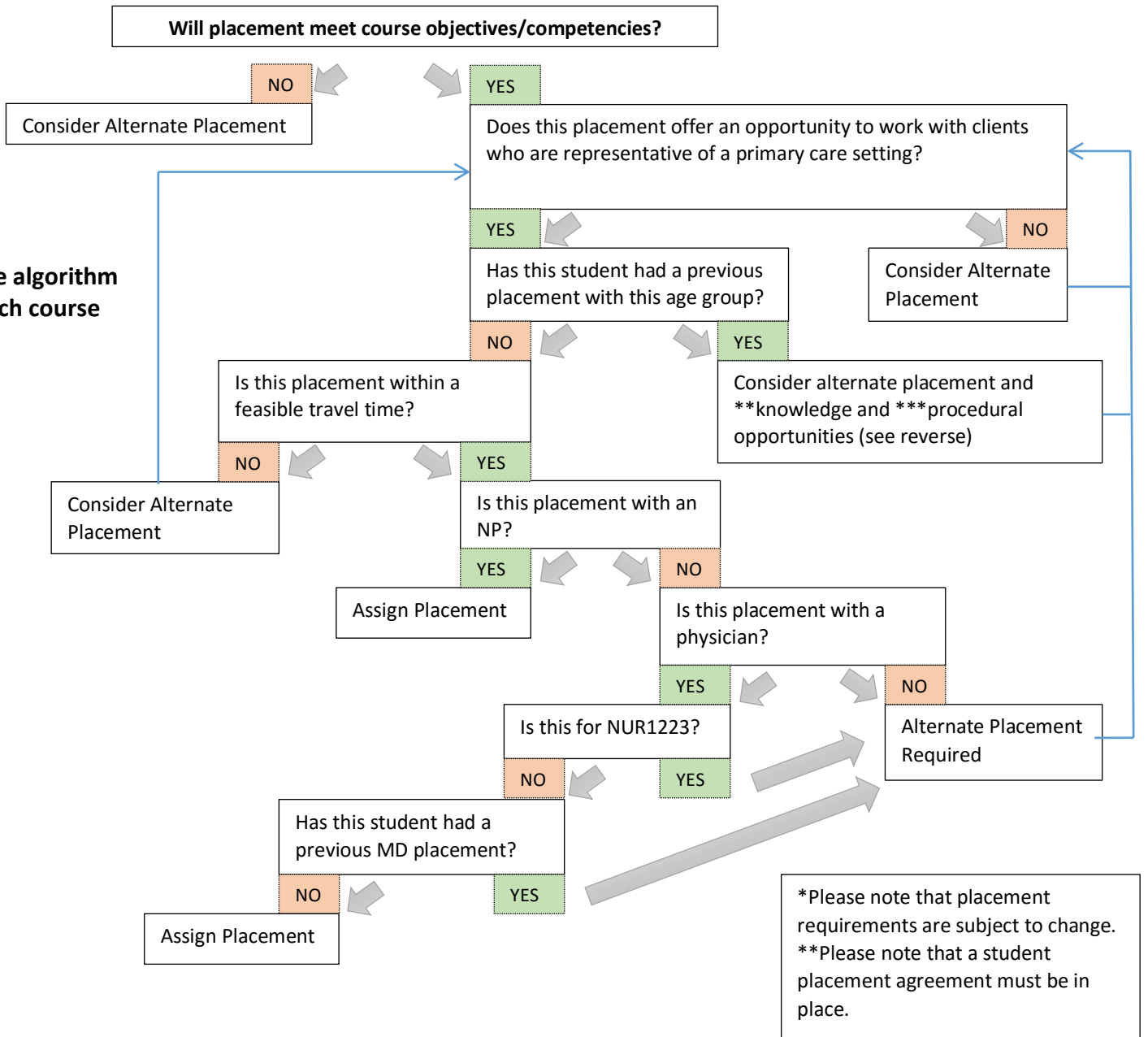
By the end of the program, students will have completed placements that cover a variety of age groups.

*NUR1114 (80 hours + 20 hours)	*NUR1117 (250 hours)	*NUR1217 (250 hours)	*NUR1221 (200 hours)
Placement must provide students with opportunity to assess (take health hx, do PE) and diagnose	Placement must provide student with opportunity to assess, dx, plan, evaluate (ordering, diagnostics/tests, completing admission/discharge note)	Placement must provide student with opportunities to assess, dx, plan, evaluate (including CDS and completing consult/referral note)	Placement must provide opportunity to demonstrate leadership

*Courses indicated must provide practicum experiences that allow for advanced full and focused health assessment, physical examination, diagnostics, pharmacological and non pharmacological therapeutic management. Therefore palliative care, consult services and virtual care should be avoided but can be undertaken during the final practicum

Placement Flow Chart

***Same algorithm for each course**



**** Knowledge Requirements**

- Health promotion, harm reduction, and disease prevention
- Anatomy, physiology, and pathophysiology
- Therapeutic communication, change management, and crisis management
- Health history, including signs and symptoms
- Physical examination
- Diagnostic and therapeutic tests and/or procedures
- Clinical decision-making and differential diagnosis
- Pharmacological and non-pharmacological/complementary/ alternative therapies
- Bio-psychosocial principles/theories
- Patient and family education and counseling
- Community resources
- Healthcare economics
- Evidence-informed practice
- Legal and ethical issues
- Cultural competence
- Principles of epidemiology, population health, and social determinants of health
- Practice management
- HEENNT, Integumentary, Respiratory, GI, CV, GU, MSK, neurological, endocrine, hematopoietic, immune/lymphatics, mental health, ID/communicable diseases, sexual/reproductive health, oncology
- Prenatal/perinatal/postnatal
- Nutrition/hydration
- Physical function and mobility
- Developmental delays/learning disabilities
- Acute and/or chronic pain
- Cognition/decision-making
- Violence, abuse or neglect
- Substance use/abuse
- Emergencies
- Palliative and end-of-life

***** Procedural Considerations**

- Minor Lesion Removal
- Microscopy
- Pap Tests
- Joint Aspirations And Injections
- Skin Biopsy
- Therapeutic Injections
- Wound Closure
- Splinting
- Casting
- Wound Management
- Incision And Drainage
- Diagnostic Interpretation of ECG
- Diagnostic Interpretation of X-Rays
- Cerumen Removal
- Pulmonary Function Testing & Office Spirometry
- Fluorescein Dye
- Long-Term Contraceptive Management
- Long-Term Hormonal Implantation
- Foreign Body Removal
- Nail Removal