



# Bloomberg Nursing Annual Research Report 2010-2011



**BLOOMBERG**  
LAWRENCE S. BLOOMBERG  
FACULTY OF NURSING  
UNIVERSITY OF TORONTO

# Vision

Shaping nursing education, research and practice.

# Mission

Committed to international leadership in research and education. Through the mentorship of outstanding and innovative faculty, our graduates excel in professional practice, lead in nursing research and scholarship and improve health locally and globally.

# Values

Scholarship and critical inquiry;  
Innovation and creativity;  
Interdisciplinarity and collaboration; and  
Social justice

# Contents

---

Letter from the Associate Dean .....	4
Research Fields .....	6
Individual Profiles .....	8
Critical Approaches to Health and Health Care	
Carles Muntaner .....	8
Bukola Salami .....	9
Effective Care and Health Outcomes	
Cindy-Lee Dennis .....	10
Bridget Doan .....	11
Nursing Health Systems	
Ann Tourangeau .....	12
Lianne Jeffs .....	13
Research Chairs .....	14
Bloomberg Nursing Around the World .....	18
Rankings .....	20
International Professorships .....	22
Research Personnel Awards .....	24
Major Appointments .....	26
Research Grants .....	27
Faculty Publications .....	33

## ***2010-2011 Bloomberg Nursing***

Publisher/Editor  
Linda McGillis Hall

Writer/Designer  
Sarah Gopaul

Contributor  
Ashifa Rajwani

# Letter from the Associate Dean

---

Welcome to our third Research Report for the Lawrence S. Bloomberg Faculty of Nursing, which was developed to acknowledge the substantial nursing research contributions that faculty, students and alumni make to the health and care of Canadians as well as the discipline of nursing overall. It reflects the research activity of our scholars for the one-year period from April 1, 2010 to March 31, 2011. The Bloomberg Faculty of Nursing at the University of Toronto is widely recognized as a research-intensive environment that promotes education and scholarship in nursing. Our faculty are world-class scholars whose expertise has shaped the discipline of nursing.

In this report, we provide an overview of our three main research fields, including the internationally renowned work of our research chairs ; multiple research recognitions by peers and organizations; and the scope and quantity of peer-reviewed faculty grants and publications. In addition, we demonstrate the Faculty's positioning in comparison to our Canadian and U.S. research university peers, and illustrate the broad national and international presence of Bloomberg Nursing research in scientific meetings, many of which are of an interdisciplinary nature.

***Dr. Linda McGillis Hall***  
**PhD, FAAN, FCAHS**  
**Professor and Associate Dean of Research and External Relations**

**“widely recognized as a research-intensive environment that promotes education and scholarship in nursing”**



**“world-class scholars whose expertise has shaped the discipline of nursing”**

# Research Fields

---

*The research activity of the Lawrence S. Bloomberg Faculty of Nursing demonstrates the integration of teaching and research in our core graduate fields of study. Within these primary study fields, individual faculty members are clustered into three research areas: Critical Approaches to Health and Health Care; Effective Care and Health Outcomes (ECHO); and Nursing Health Systems. Our undergraduate, masters and doctoral students are offered opportunities to gain experience through actively engaging in research with Bloomberg Nursing faculty in their programs of interest within these research fields.*

## ***Critical Approaches to Health and Health Care***

Scholars in this research field explore issues in health and health care using a range of critical and social theories as a foundation. The work of this group incorporates a number of research methodologies, with an emphasis on qualitative, participatory and theoretical inquiry. Three strands of investigation are pursued: several members study health disparities that stem from interconnected and marginalizing social relations of gender, income inequality, disability, racism and heteronormativity; others analyze the historical, ethical and political basis of health care; and finally, there is a strong focus on international/global health. In the next section, you'll read about Dr. Carles Muntaner, whose research concentrates on occupational and social inequalities in health across continents; as well as Bukola Salami, a PhD student examining the challenges encountered by nurses migrating to Canada through the live-in caregiver program.

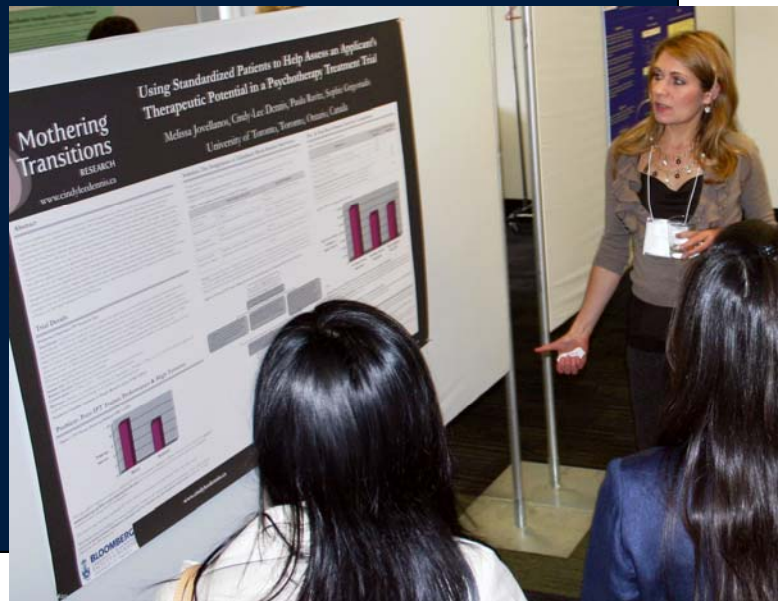
## ***Effective Care and Health Outcomes (ECHO)***

The focus of this research field is on rigorous evaluations of conventional and innovative forms of nursing and health care, using randomized controlled trials, theory-driven evaluations and systematic reviews of evidence. Studies are conducted in formal and informal health care settings, addressing a wide variety of health and illness issues in, for example, maternal-newborn health, cancer care, genetics, critical care, cardiovascular disease, acute and chronic pain in adults, infants and children, and sleep. Many of the studies are multi-disciplinary and international in scope. For this field of study, we profile Dr. Cindy-Lee Dennis who was recently appointed Shirley Brown Chair in Women's Mental Health Research, which is aligned with her work in postpartum depression; and undergraduate student Bridget Doan, whose work on Dr. Robyn Stremmer's research team is funded by the Ontario Early Researcher Award program.

## Nursing Health Systems

Nursing health systems research involves the application of research methods from social and health sciences, biostatistics, and economics to investigate questions related to nursing and health services resource planning, organization, management, financing and delivery. Research foci include: health human resources, nurse migration, nursing effectiveness, nursing and health outcomes, quality work environments,

performance measurement, health care teams, technology, patient safety, and nursing leadership. In this report, we outline the achievements of Dr. Ann Tourangeau, the current Bloomberg Faculty Limited-term Professor in patient safety; and Dr. Lianne Jeffs in her role as director, nursing research at St. Michael's Hospital, which includes an award-winning initiative .



## *Addressing health inequalities*

Dr. Carles Muntaner is the definition of an international researcher. In addition to being a professor at the Lawrence S. Bloomberg Faculty of Nursing, University of Toronto, Muntaner is an adjunct professor of mental health at the Johns Hopkins University Bloomberg School of Public Health in Baltimore, U.S.A. and a research collaborator at the Health Inequalities Unit at the Universitat Pompeu Fabra in Barcelona, Spain. His research spans the globe, examining health inequalities on almost every continent.

Since the 1980s, Muntaner has conducted research on the mental health of the working poor in Canada, the U.S., European Union, Latin America, East Asia and Western Africa, integrating occupational and social disparities in health research. He and his colleagues consistently demonstrate “efficient and fair employment and welfare state policies are needed to reduce employment-related health inequalities.”

“Globalization has increased the inequities in working conditions across regions, countries, social groups and occupations,” says



*Dr. Carles Muntaner*  
PhD, MHS, BSc  
Professor

Muntaner. “It’s also generated substantial social imbalances in health.” He is currently working on a study funded by the Ontario Ministry of Health and Long-Term Care (MOHLTC), as well as research focused in Chile and Spain that is gradually

being extended to the rest of Europe.

The MOHLTC requested a review of the health effects of flexicurity, a welfare-state model that combines labour-market flexibility and social security, and its potential implications for Ontario. An extensive evaluation of existing empirical evidence on the relationship between these labour market policies and health equity found potentially health-damaging trends in countries governed by flexicurity logic without strong social protection, challenging the assumption that it promotes the population’s well-being.

In Chile, Muntaner and his team conducted the first national survey on health and work. It measured conditions of employment, work, health and quality of life, allowing researchers to demonstrate the link between health, employment and social equity. “This study shows informal employment and increased levels of job insecurity can result in illness, addiction and poor mental health” says Muntaner.

He also conducted a study in Spain analysing the association between self-reported health status and social class, and examining the role of work and employment conditions, material standards of living and household labour in explaining this connection. It’s the first study relating social class (understood as relations of control over productive assets) to risk of death. The findings highlight a link between “working-class” positions and mortality among men, while demonstrating women’s health in a patriarchal society is weakened by excessive amounts of uncompensated household work.

## *Credential hurdles faced by migrant nurses*

Bukola Salami, a Nigerian-born Canadian educated nurse, is studying credential recognition and the process of integration of internationally educated nurses in Canada as a PhD student at the Bloomberg Faculty of Nursing under the supervision of Dean Sioban Nelson.

Salami's doctoral research study explores the migration of internationally educated nurses to Canada through the Live-in Caregiver (LIC) program. She aims to gain an understanding of the multiple perspectives of diverse stakeholders with respect to the rights and obligations of nurses who enter Canada by this route. "Increasing numbers of live-in caregivers are migrating to Canada every year," says Salami, "but nurses who migrate through the LIC program face significant challenges when trying to integrate into the nursing workforce."

One of the barriers is they must work as LICs for a minimum of 22 months before applying for permanent resident status; however, to become a nurse in Canada, they must be permanent residents and demonstrate nursing practice within the five years prior

to applying for registration. A recent proposed change to entry into practice for Ontario nurses would require internationally educated nurses to have practiced within the last three years to be eligible for registration. Hence, these times away from

professional practice often result in significant obstacles to professional integration.

Her dissertation will use a single-embedded case study methodology of nurses who migrate to Ontario through the LIC program and will be composed of three phases. The first phase consists of analysis of pertinent government documents, media reports and online open discussion forums. Phase two is comprised of interviews with 12 to 30 nurses who are either currently in the migration process or who migrated to Ontario through the LIC program. The third phase involves interviews with stakeholders, including immigration policy makers, nursing policy makers, live-in caregiver advocacy groups, employers, and recruiters. The research study will be guided by the feminist concept of global care chains as developed by Dr. Arlie Hochschild and Rhacel Salazar Parreñas.

In support of her study, Salami was awarded a Social Sciences and Humanities Research Council Doctoral Fellowship. Earlier in her program of study, she received a fellowship from the Ontario Training Centre in Health Service and Policy Research funded by the Canadian Institutes of Health Research and was also offered an Ontario Graduate Scholarship.

"Canada is becoming increasingly reliant on temporary migrant workers," says Salami. Thus, the results of this study have the potential to contribute to the ability of immigration and nursing policy makers to maximize the integration of internationally educated nurses in Canada, as well as move the country closer to achieving global equity of socio-economic opportunities for LICs.



*Bukola Salami*  
MScN, BScN  
PhD student

## *Leading the way in women's mental health*

Postpartum depression (PPD) is the leading form of morbidity for women following childbirth. It is estimated approximately 13 per cent of mothers experience PPD and documentation exists indicating infants and children of depressed mothers have significantly poorer development trajectories. These are just a few of the reasons Dr. Cindy-Lee Dennis' research has focused on evaluating innovative interventions for the prevention and treatment of PPD.

Dennis' dedication to this important women's mental health issue made her the ideal candidate for the Shirley Brown Chair in Women's Mental Health Research based at the Women's College Research Institute. Announced in March 2011, Dennis is the first nurse to receive the appointment since the chair was created as a collaboration between the University of Toronto, the Centre for Addiction and Mental Health, and Women's College Hospital.

"Women are a historically underserved group, making it difficult to overstate the importance of this chair," says Dennis, who is also a Bloomberg Nursing professor.



*Dr. Cindy-Lee Dennis*  
PhD, MScN, BScN  
Professor

"Its integration of disciplines and goal to eliminate the stigma associated with mental health disorders is truly exemplary." The Chair is named in honour of a young lawyer who succumbed to severe depression in 1996.

As the Shirley Brown Chair, Dennis is the principal investigator on several related studies. "New Mothers in a New Country" examines the relationship between recent immigrant status, the acculturation process and psychological problems among Chinese mothers. One factor being explored is whether traditional postpartum rituals have a protective effect on the development of PPD and how these aspects of the culture may be strengthened.

Her study evaluating the effects of telephone-based interpersonal psychotherapy (IPT) for the treatment of PPD uses a brief and highly structured manual-based psychotherapy that addresses interpersonal issues in depression. Most mothers prefer "talking therapy" as a form of treatment, but IPT is not widely available - especially in rural and remote areas. To improve access, telepsychiatry has been introduced. Dennis' previous research demonstrated telephone-based support from a peer who had experienced PPD can cut the incidence of the disorder in high-risk women by 50 per cent.

Finally, the IMPACT study (Impact of maternal and paternal postpartum depression) extends Dennis' research to involve both parents. This novel study proposes to examine the complex mechanisms related to the familial impact of parental (mother and father) depression in the first two years of a child's life. A greater understanding of how PPD influences parenting behaviours is needed for effective interventions to be developed and very little is known about paternal PPD.

## *Hands-on experience from an acclaimed researcher*

Bridget Doan is a bachelor's student at the Bloomberg Faculty. After receiving an honours degree in biology at St. Francis Xavier University, she never expected to follow in her mother's footsteps and become a nurse. But Doan soon realized it was one of the best ways to combine her interest in science and desire to work with people.

Since beginning her studies, Doan's clinical placements have provided her with the chance to work with people through every stage of the life cycle in a variety of situations and hospitals. It's also given her the opportunity to be a key contributor in a unique research study. Doan is a member of Professor Robyn Stremler's team for the Sleep TYME (Throughout Your Motherhood Experience) Study. Her participation is funded by Stremler's Early Researcher Award, a competitive program which aims to improve Ontario's ability to attract and retain the best and brightest research talent. Once completed, the project will provide a better understanding of the prevalence of and risk factors for sleep disturbance in pregnancy, and its relationship to adverse perinatal outcomes; this will guide the development of key interventions to improve sleep during pregnancy.

One of Doan's primary functions is as a recruiter, which means she spends a lot of time in OB-GYN offices and ultrasound clinics

where she finds the enthusiasm of the mothers-to-be contagious. "It's great to be able to connect with the subjects on a personal level," says Doan. "At the end of interviews, many of the mothers are even offering to send us baby photos." Moreover, assisting with data collection and entry allows her to see the trends amongst participants, demonstrating the importance of the study. "Dr. Stremler's been very receptive to having an undergrad student on the team and has enabled me to become involved in all aspects of the study," says Doan.

"Bridget has been a wonderful addition to our research team," says Stremler. "Her willingness to take on big and small tasks is essential to running a research project. She has original ideas, great initiative and a professional, friendly manner that motivates women to want to participate in our study."

Doan's main interest is in pediatrics. She's completed a paediatric mental health placement at the Hospital for Sick Children, working with kids in the eating disorders, and crisis and psychosis programs. "I was able to bond with the patients," says Doan, "and it gave me the opportunity to practice nursing in a holistic care setting."



*Bridget Doan*  
BSc  
BScN student

## *Improving patient safety through study*

One of the programs established with Lawrence S. Bloomberg's generous gift includes a Limited-Term Professorship in Patient Safety. This position provides the opportunity to expand a Faculty member's innovation and excellence in research. In addition, the professorship aims to extend the appointee's program of research in support of advancing nursing practice and patient care. Dr. Ann Tourangeau currently holds the professorship in patient safety.

The position includes three primary goals: 1) build academic, healthcare, policy and industry partnerships that will ensure a comprehensive approach to promoting safer patient care both in hospital and community-based settings; 2) conduct relevant research; and 3) train highly qualified personnel who will effect change.

Tourangeau has built her career around examining nursing-related determinants of health care outcomes, including the causes and influencing factors affecting patient safety and nurse work environments. "The professorship allows me to focus on patient safety research and developing methods

to manage causes that are modifiable," says Tourangeau, who is also an associate professor and the graduate program coordinator at the Bloomberg Nursing Faculty. More specifically, she focuses on patient safety outcomes related to nurse

retention and hospital mortality rates. Tourangeau is currently the principal investigator on three studies describing nurse retention in acute care, home care and educational sectors that will develop knowledge about the reasons nurses leave or stay in their employment.

Statistics show that in acute and home care, many nurses continue to leave their workplaces before the normal age of retirement. However, safe and effective health care is dependent on retaining qualified nursing personnel. The Canadian Institutes of Health Research funded a study to examine what influences acute nurses' decisions to stay employed. As current research only explains an average of 36 per cent of variance affecting nurses' choices, there are clearly other unknown factors to be determined. The home care nurse retention study is funded by the Ontario Ministry of Health and Long-Term Care (MOHLTC). Although a number of retention initiatives have been undertaken in Ontario, none are specific to the unique area of home care nursing and the factors that influence home care nurse retention.

Additionally, attaining and maintaining an adequate supply of nurses in Ontario is reliant on attaining and maintaining an adequate supply of nurse faculty. But between 2007 and 2008, there was nearly a 13 per cent decrease in Ontario nurses who identified their primary role as nurse faculty. The main focus of one of Tourangeau's MOHLTC funded studies is to identify generation-specific determinants of nurse faculty's intentions to remain employed and identify preferred, targeted strategies to promote their retention.



*Dr. Ann Tourangeau*  
PhD, MScN, BScN  
Professor and Graduate  
Program Coordinator

## *Advancing practice-based nursing research*

Dr. Lianne Jeffs has two distinct areas of interest, but they are unquestionably linked: 1) enhancing the role of professional, scholarly nursing practice by addressing the gap between theory/research and practice in the health care system; and 2) designing and evaluating the delivery of safer health care systems by responding to and learning from near misses and other safety threats across point-of-care transitions. Jeffs' leadership in these areas is undeniable.

As director, nursing research, Jeffs maintains an impressive record of elevating nurses' involvement in research at St. Michael's Hospital. In May 2010, she was presented with the Canadian Institutes of Health Research (CIHR)/Institute of Health Services and Policy Research Rising Star award. The honour recognized her work in knowledge translation related to her role as one of the chief creators of the Nursing Research Advancing Practice (RAP) program.

RAP was designed to provide staff nurses with the competencies to develop, implement and evaluate a research project focused on a question that emerged from their clinical practice. "The RAP program made research relevant to their practice," says Jeffs, a three-time University of Toronto graduate (BScN, MSc and PhD) and Bloomberg Nursing professor (status). "It

was a way to get nurses living and breathing evidence-based care and show the impact related to a nurse's ability to improve care." In addition to being a key retention strategy, participants felt more confident and competent in their ability to provide safer care.

Projects supported by RAP have included: exploring effective pain management assessment in non-verbal patients; the 'Sugarless Candy Study,' which evaluated the impact of sugarless candy on the perception of thirst in dialysis patients; and identifying the reasons for patient falls among trauma-neurosurgery's in-patient population.

Jeffs' complementary research pursuit focuses on enhancing patient safety and organizational performance. A study she is currently spearheading, funded by CIHR, will outline the quality outcomes for complex care patients as they transition between acute care hospitals, complex care, rehabilitation care, long-term care, home care or primary health care settings. In a closely related study funded by the Canadian Nurses Foundation, Jeffs has adopted an inter-professional team approach, which includes patients and their families, to ensure all influences on quality outcomes are taken into account. "We can still be doing a better job of including patients' views of care," says Jeffs. The study's objective is to determine how to recognize potentially risky situations, minimizing the effects and/or eliminating the occurrence of unnecessary adverse patient outcomes.



*Dr. Lianne Jeffs*  
PhD, MScN, BScN

Director, Nursing Research  
at St. Michael's Hospital

# Research Chairs

---

*The Lawrence S. Bloomberg Faculty of Nursing has an unprecedented nine research chairs – more than any other nursing faculty in Canada.*

*Research chairs are awarded to faculty who have demonstrated global leadership in their field in both academic excellence and scholarly research. Several of the research chairs held within the Bloomberg Faculty of Nursing are funded by national peer-reviewed competitions, while others are endowed research chairs in collaboration with affiliated academic health science centres.*

## ***Critical Approaches to Health and Health Care***

### **Bloorview Kids Foundation Chair in Childhood Disability Studies**

(with Holland Bloorview Kids Rehabilitation Hospital)

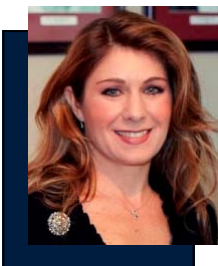


#### ***Dr. Patricia McKeever***

Dr. Patricia McKeever, senior scientist at Holland Bloorview Kids Rehabilitation Hospital and professor at the Lawrence S. Bloomberg Faculty of Nursing, University of Toronto, was named the inaugural holder of the Bloorview Kids Foundation Chair in Childhood Disability Studies in November 2007. This chair builds on McKeever's research program, which addresses sociospatial, philosophical and policy aspects of childhood disability and chronic illness, and focuses on the physical, social and policy barriers to inclusion that Canadian children with disabilities and their families encounter.

## ***Effective Care and Health Outcomes***

### **Canada Research Chair in Perinatal Community Health (Tier 2)**



#### ***Dr. Cindy-Lee Dennis***

Dr. Cindy-Lee Dennis, associate professor at the Lawrence S. Bloomberg Faculty of Nursing, University of Toronto began a Tier 2 Canada Research Chair in Perinatal Community Health in September 2007. Dennis' research program is directed towards rigorously evaluating interventions to improve the care of pregnant and postpartum women, including multi-site randomized controlled trials related to the prevention and treatment of postpartum depression. Her research provides evidence-based information to address health problems that many pregnant and postpartum women experience with the goal of promoting a healthy transition to motherhood.

## **Heather M. Reisman Chair in Perinatal Nursing Research**

(with Mount Sinai Hospital)



***Dr. Ellen Hodnett***

Canada's first endowed chair in nursing, the Heather M. Reisman Chair in Perinatal Nursing Research was established in 1996 to advance studies into forms of care for child-bearing women. Dr. Ellen Hodnett, the inaugural chair holder, is currently in her second five-year term in the position. Hodnett is a professor with the Lawrence S. Bloomberg Faculty of Nursing, University of Toronto, is cross-appointed in the Faculty of Medicine, Department of Public Health Sciences, and appointed in nursing at Mount Sinai Hospital. Hodnett's research program focuses on rigorous evaluations, usually through multi-centre, randomized controlled trials examining the impact of nursing care on women before, during and after childbirth.

## **Ontario Women's Health Council Chair in Women's Health**

(with St. Michael's Hospital)



***Dr. Arlene Bierman***

Created in 2001, the Ontario Women's Health Council Chair in Women's Health focuses on identifying and addressing the health care needs of women who are vulnerable due to socioeconomic and ethno-cultural factors. The Chair works in partnership with St. Michael's Hospital and its program on inner city health. Dr. Arlene Bierman is the inaugural chair holder. A geriatrician and health services researcher, Bierman's research interests include women's health, access to care and aging. As chair holder and professor at the Lawrence S. Bloomberg Faculty of Nursing, University of Toronto with a cross-appointment to the Faculty of Medicine, she teaches and conducts research on disadvantaged populations.

## **RBC Financial Group Chair in Oncology Nursing Research and Education**

(with the University Health Network)



### ***Dr. Doris Howell***

As Canada's first endowed chair in oncology nursing research, The RBC Financial Group Chair in Oncology Nursing Research and Education is supported jointly through affiliations with Cancer Care Ontario, the Canadian Cancer Society (Ontario Division), University Health Network, and the Lawrence S. Bloomberg Faculty of Nursing, University of Toronto. Dr. Doris Howell was appointed to hold the chair in October 2004. She is working on enhancing research in cancer nursing through the implementation of evidence-based approaches to care; examining the effectiveness of nursing interventions in the reduction of the severity of symptoms and distress; and improving the patient and family experience through evaluation of the implementation of holistic models of care that focus on the individual patient's needs.

## **RBC Financial Group Chair in Cardiovascular Nursing Research**

(with the University Health Network)

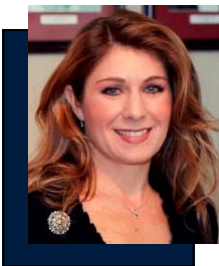


### ***Dr. Sean Clarke***

The RBC Financial Group Chair in Cardiovascular Nursing Research is supported jointly through the University Health Network (UHN), which has Canada's premier cardiovascular institute, and the Lawrence S. Bloomberg Faculty of Nursing, University of Toronto. Dr. Sean Clarke was appointed as the inaugural chair holder in July 2008. His research program focuses on expanding research in cardiovascular nursing to examine outcomes for cardiovascular patients across the continuum of care; examining organizational influences on nurses' clinical decision-making and interdisciplinary team functioning in acute cardiac care; and studying outcomes of the use of advanced practice nurses in various roles.

## **Shirley Brown Chair in Women's Mental Health Research**

(with the Women's College Research Institute)

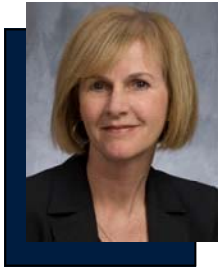


### ***Dr. Cindy-Lee Dennis***

The Shirley Brown Chair in Women's Mental Health Research is supported by a partnership between Women's College Research Institute, the Centre for Addiction and Mental Health (CAMH), and the Lawrence S. Bloomberg Faculty of Nursing, University of Toronto. Dr. Cindy-Lee Dennis, associate professor, was appointed to the chair in March 2011. Providing a focal point for advocacy on women's mental health issues, the chair supports an internationally recognized program of research and takes the leading role in Canada in the drive to improve women's mental health and the treatment and prevention of serious mental illnesses.

## **The Signy Hildur Eaton Chair in Paediatric Nursing Research**

(with the Hospital for Sick Children)



### ***Dr. Bonnie Stevens***

Established in 2000, this is the first endowed chair in paediatric nursing in Canada. The Signy Hildur Eaton Chair in Paediatric Nursing Research supports an outstanding nurse scientist in the development of a research program in paediatric nursing at The Hospital for Sick Children. Dr. Bonnie Stevens is the premiere and current holder of this chair as well as a professor at the Lawrence S. Bloomberg Faculty of Nursing and the Faculty of Medicine at the University of Toronto. Stevens' research interests include the assessment and management of pain in infants and children; the impact of various health care delivery models on child and family quality of life; and knowledge translation.

## ***Nursing Health Systems***

### **CHSRF/CIHR Chair in Nursing Human Resources**



### ***Dr. Linda O'Brien-Pallas***

The Canadian Health Services Research Foundation/Canadian Institutes of Health Research Chair in Nursing Human Resources is aimed at increasing knowledge and expanding research in the area of health human resources, and collaborating with key administrative and government stakeholders in order to build structures for policy development and planning. Dr. Linda O'Brien-Pallas, the inaugural chair holder, is a professor at the Lawrence S. Bloomberg Faculty of Nursing and the Faculty of Medicine at the University of Toronto, and co-principal investigator of the Nursing Health Services Research Unit (University of Toronto site).

# Bloomberg Nursing Around the World

---

## *Canada*

### Alberta

**Calgary** - Canadian Pain Society Annual General Conference

**Edmonton** - Canadian Association of Midwives Annual Meeting

### British Columbia

**Vancouver** - Pediatric Academic Societies Annual Meeting

### Nova Scotia

**Halifax** - Canadian Association of Health Services and Policy Research (CAHSPR) Annual Conference

**Halifax** - Canadian Healthcare Safety Symposium

### Ontario

**Niagara Falls** - Canadian Pediatric Society Conference

**Ottawa** - Canadian Conference on Global Health

### Quebec

**Montreal** - 39<sup>th</sup> Canadian Association of Gerontology Annual Conference

**Montreal** - Canadian Cardiovascular Congress

**Montreal** - International Association of the Study of Pain, 13<sup>th</sup> World Congress

**Montreal** - Society for Research in Child Development Biennial Meeting

**Quebec City** - Canadian Home Care Association Summit

**Quebec City** - International Psycho-Oncology Society Conference

**Quebec City** - World Association of Sleep Medicine and Canadian Sleep Society Congress

## *United States*

### California

**Los Angeles** - Oncology Nursing Society

**San Diego** - 40th Congress of the Society of Critical Care Medicine

### Colorado

**Denver** - Annual Meeting of the American Public Health Association

**Denver** - Pediatric Academic Societies Meeting

### District of Columbia

**Washington** - American Society of Clinical Oncology

### Louisiana

**New Orleans** - Gerontological Society of America (GSA) Annual Scientific Meeting

### Massachusetts

**Boston** - 42nd Congress of the International Society of Pediatric Oncology

**Boston** - Academic Emergency Medicine Annual Meeting

### New York

**Brooklyn** - National African-American MSM Leadership Conference on HIV/AIDS and other Health Disparities

### Pennsylvania

**Pittsburgh** - International Symposium on Rapid Response Systems and Medical Emergency Teams

## *South America*

### Brazil

**Brasilia** - International Conference on the Humanization of Childbirth

**Fortaleza** - 4<sup>th</sup> Iberoamerican Congress on Qualitative Health Research

**Rio Branco** - Collaborative Leadership, Advocacy and Ethics in Primary Health Care Nursing

**Ribeirao Preto** - International Symposium on Knowledge Translation

### Peru

**Lima** - International Society for Research in Human Milk and Lactation (ISRHML) Conference

## *Europe*

### Austria

**Vienna** - International Association for Medical Education

### Belgium

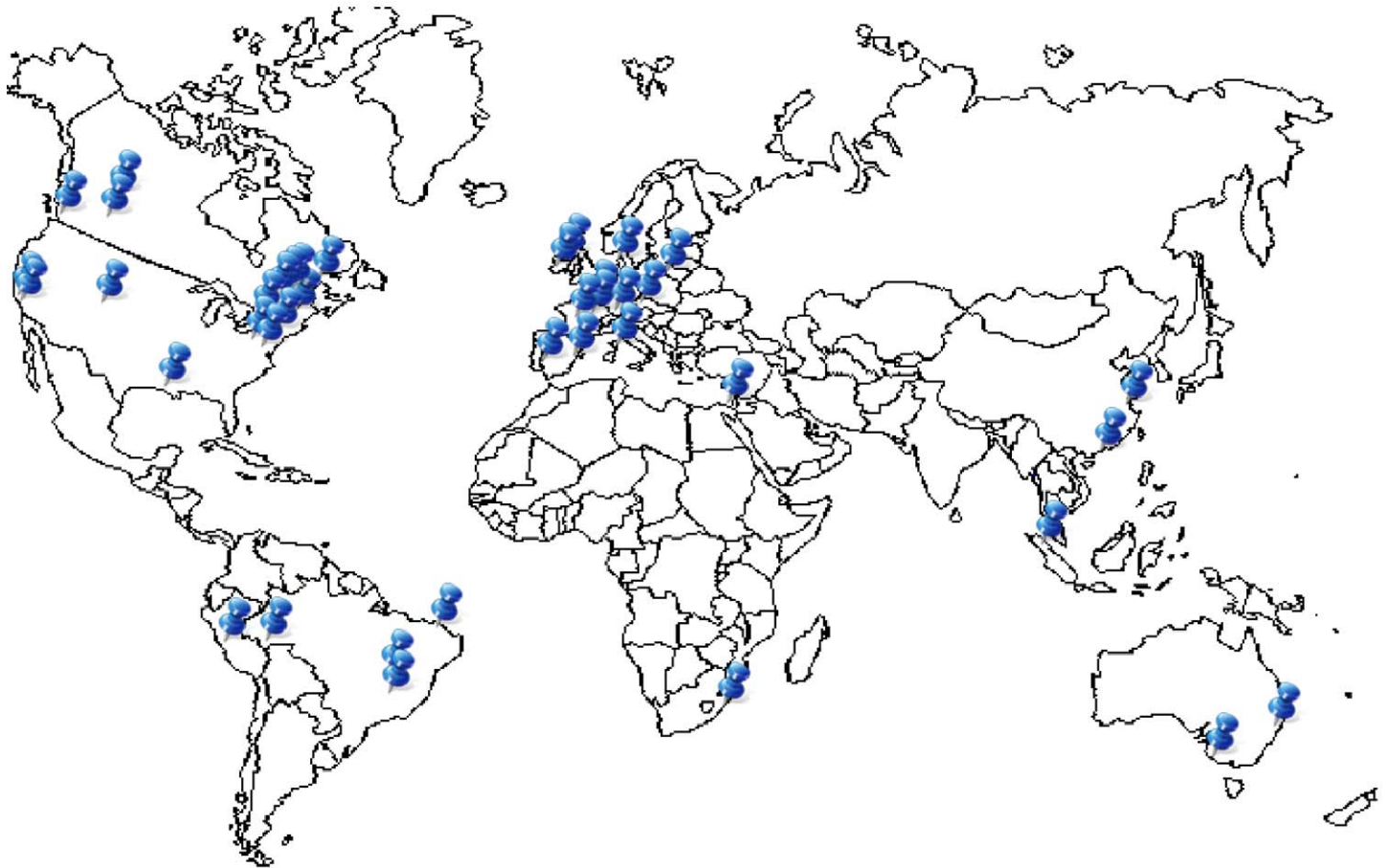
**Brussels** - 27<sup>th</sup> Congress of the Belgian Hospital Association

### Denmark

**Odense** - 4<sup>th</sup> International "In Sickness & In Health" Conference

### England

**London** - UK Intensive Care Society State of the Art Meeting



**Ireland**

**Belfast** - Queen's University, School of Nursing and Midwifery, Research Conference

**Israel**

**Tel Aviv** - International Congress on Gender Medicine

**Italy**

**Milan** - National Postpartum Depression Conference

**Rome** - Congress of the International Pediatric Sleep Association

**Netherlands**

**Amsterdam** - International Forum on Quality and Safety in Health Care

**Poland**

**Wrocław** - 1st International Conference on Quality of Life in Cardiovascular Diseases

**Portugal**

**Lisbon** - 3<sup>rd</sup> International Congress of Nursing

**Scotland**

**Glasgow** - Association for Medical Education in Europe (AMEE)

**Spain**

**Barcelona** - European Society of Intensive Care Medicine International Congress

***Africa***

**South Africa**

**Durban** - International Neonatal Meeting

***Asia***

**China**

**Hong Kong** - Hong Kong Nursing Research Forum

**Shanghai** - Annual International Congress of Cardiology

**Malaysia**

**Penang** - Perinatal Society of Malaysia

***Australia***

**New South Wales**

**Sydney** - World Congress on Pediatric Critical Care

**Victoria**

**Melbourne** - 35<sup>th</sup> Australia and New Zealand Intensive Care Society, Annual Scientific Meeting on Intensive Care

**Melbourne** - Victorian Association of Neonatal Nurses Annual Symposium

# Rankings

## *Publication and citation rankings for the University of Toronto*

The Bloomberg Faculty of Nursing ranks first among Canadian and U.S. public university nursing faculties in publications and citations, according to *U of T's Performance Indicators for Governance 2010 Summary*. The report measures the university's progress towards long-term goals in a range of teaching and research areas.

The table below is a summary of U of T's publication and citation rankings in relation to other Canadian research universities and members of the Association of American Universities (AAU). Bloomberg Nursing is second only to the University of Pennsylvania amongst private AAU schools. Rankings are an indication of an institution's performance, particularly internationally. The Bloomberg Faculty's results are highlighted, demonstrating its pre-eminence among Canadian and American research university peers.

	Canadian Peers		AAU Public		AAU All	
	Publications	Citations	Publications	Citations	Publications	Citations
<b>All Fields</b>	1	1	1	1	2	3
<b>All Sciences</b>	1	1	1	1	2	3
Acoustics	1	1	5	3	5	3
Biophysics	1	1	2	8	5	14
<i>Engineering &amp; Materials Science</i>	1	1	7	7	8	10
Biomaterials	1	1	1	4	2	6
Environmental Engineering	1	1	2	1	2	1
<i>Health &amp; Life Sciences</i>	1	1	1	1	2	3
Cardiac & Cardiovascular System	1	1	1	1	3	4
Molecular Biology & Genetics	1	1	1	1	2	5
Neuroscience & Behaviour	1	1	1	2	3	6
<b>Nursing</b>	<b>1</b>	<b>1</b>	<b>1</b>	<b>1</b>	<b>2</b>	<b>2</b>
Mathematics	1	1	5	8	7	12
Philosophy	1	1	1	4	1	8
<i>Social Sciences</i>	1	1	2	5	3	7
Anthropology	1	1	3	6	4	9
Psychology	1	1	2	4	3	7
Social Work	1	1	3	2	3	2

Data source: University Science Indicators 2009 Standard and Deluxe Editions, Thomson Reuters.



Counts of publications and citations are important indicators of a faculty's scholarly impact as measured by research output and intensity. This is particularly true in scientific disciplines, such as nursing, where research reporting is predominately journal-based. The above comparison captures our research productivity relative to our peers.

The University of Toronto educates more students and makes more discoveries than any other university in Canada and is recognized as one of the foremost research-intensive universities in the world. Moreover, the size and complexity of the institution leads to greater opportunities for our students and faculty.

The AAU is a non-profit association of 61 U.S. and two Canadian (U of T and McGill University) preeminent public and private research universities. Established in 1900, membership is by invitation and based on the high quality of programs of academic research and scholarship at all levels, as well as recognition that a university is outstanding by reason of the excellence of its research and education programs. U of T became a member in 1926.

# International Professorships

---

*The fall 2007 announcement of the generous \$10 million donation from philanthropist and financier Lawrence S. Bloomberg provided the opportunity to globally expand our innovation and excellence in research. To generate increased international collaboration opportunities, a visiting professor program was developed.*

## ***Frances Bloomberg International Distinguished Visiting Professor 2010 - 2011***

### **Dr. Pamela H. Mitchell**

Dr. Pamela H. Mitchell is a professor of Biobehavioral Nursing and Health Systems, School of Nursing and adjunct professor of Health Services, School of Public Health and Community Medicine at the University of Washington. Her research and teaching focus on hospital and ambulatory care delivery systems; effective management of clinical care systems; comparative effectiveness of biobehavioural interventions for patients with acute and chronic cardio-cerebrovascular disease; and outcomes of inter-professional education. These studies have been funded by the National Institute of Nursing; the National Heart, Lung and Blood

Institute; and the Bureau of Health Professions, Health Resources Services Administration.

Mitchell is immediate past-president of the American Academy of Nursing, and a member and past chair of the American

Academy of Nursing Expert Panel on Quality Care. She was also a visiting professor at the University of Sao Paulo in Brazil and Flinders University in Australia.

One of the reasons Mitchell received the appointment is her background in fusing health services/systems and clinical research. She worked with Bloomberg Nursing faculty in the Nursing Health Systems field and the Nursing Health Services Research Unit (NHSRU) to plan for the future of research in these areas. In February 2011, Mitchell led a presentation and discussion titled, "Evidence-based care: creating evidence at the point of care." Approximately 25 members of the Bloomberg Nursing Faculty and chief nurse executives from the Toronto Academic Health Science Network (TAHSN) attended the talk that described U.S. models of evidence-based practice in which a group of staff nurses identify clinical issues in their care unit that require systematic inquiry, refine the question into a research or process improvement statement, conduct and analyze the data, and make appropriate changes in practice. Mitchell considers this



*Dr. Pamela H. Mitchell*  
PhD, RN, FAHA, FAAN

luncheon the turning point of her professorship; every visit after the presentation was filled with appointments at various hospitals, and conversations with faculty and nursing leaders about building capacity and capitalizing on the strong linkages that already exist between the Bloomberg Faculty of Nursing and its affiliates.

In addition, with Mitchell's help, a nursing research consortium was formed in spring 2011 among the Lawrence S. Bloomberg Faculty of Nursing and TAHSN hospitals, with Dr. Linda McGillis Hall, associate dean of research and external relations at Bloomberg Nursing, and Dr. Lianne Jeffs, director, nursing research at St. Michael's Hospital, as co-chairs.

### ***Former Frances Bloomberg International Distinguished Visiting Professors***

#### **Dr. Judith Oulton**

Throughout 2009 – 2010, Dr. Judith Oulton was named to the post of Frances Bloomberg International Distinguished Visiting Professor. An influential health policy leader, Oulton has served as CEO of the Geneva-based International Council of Nurses (ICN), a federation of national nurses representing more than 130 countries worldwide. During her time at the Bloomberg Nursing Faculty, she worked with the International Office to enhance our profile worldwide and strengthen global interactions for the faculty.

#### **Dr. Wendy Chaboyer**

Beginning in the fall of 2008, Dr. Wendy Chaboyer, a professor in nursing at Griffith University in Australia, was named the Frances Bloomberg International Distinguished Visiting Professor. Chaboyer liaised with Bloomberg Limited-Term Professor Dr. Diane Doran in linking with a number of clinical affiliate agencies while at the Bloomberg Nursing Faculty. These initiatives focused on the area of patient safety on projects directed towards improving nursing handover and assessing competence in the operating room.

#### **Dr. Alex Molassiotis**

From the University of Manchester in the United Kingdom, Dr. Alex Molassiotis was named the inaugural Frances Bloomberg International Distinguished Visiting Professor for the academic year of 2007 - 2008. Molassiotis is a professor of cancer and supportive care at the School of Nursing, Midwifery and Social Work, University of Manchester. A leading figure in cancer nursing research and end of life care in the U.K. and Europe, his focus was on the development of capacity building initiatives in collaboration with Bloomberg Nursing clinical partner, Dr. Doris Howell, RBC Financial Group Chair in Oncology Nursing Research and Education, for the development of research in cancer and palliative care nursing.

# Research Personnel Awards

---

*Faculty researchers from the Lawrence S. Bloomberg Faculty of Nursing have achieved substantial success in research personnel award competitions, both at the provincial and national levels. The awards are designed to encourage the development and retention of emerging research scientists who are judged by their peers to be outstanding in their field of study. These funding programs assist in training and early career development by providing some salary support to Bloomberg Nursing for the research and scholarly activities of these select investigators. Research personnel awards held by our researchers include Canadian Institutes of Health Research (CIHR) New Investigator Awards, and Ontario Ministry of Health and Long-Term Care (MOHLTC) Career Scientist and Nursing Career Awards.*

## *CIHR New Investigator Awards*



### **Dr. Robyn Strempler**

July 2008 to June 2011

Effective Care and Health Outcomes field  
The TIPS for Infant and Parent Sleep Trial



### **Dr. Kelly Metcalfe**

July 2007 to June 2012

Effective Care and Health Outcomes field  
Differences in uptake of cancer prevention options in Canadian women with a BRCA1 or BRCA2 mutation



### **Dr. Janet Angus**

July 2006 to June 2011

Critical Approaches to Health and Health Care field  
Locating barriers and supports to maintenance of risk modifications in coronary artery disease

## *MOHLTC Nursing Career Award Recipients*

### **Career Scientist Award**



**Dr. Louise Rose**

2010

Effective Care and Health Outcomes field

### **Senior Nursing Career Award**



**Dr. Linda McGillis Hall**

July 2009 to June 2012

Nursing Health Systems field



**Dr. Diane Doran**

July 2009 to June 2012

Nursing Health Systems field

### **Junior Nursing Career Award**



**Dr. Jessica Peterson**

July 2009 to June 2012

Nursing Health Systems field



**Dr. Raquel Meyer**

July 2009 to June 2012

Nursing Health Systems field

# Major Appointments

---

## ***Ellen Hodnett***

2011-2012 Member of the Canadian Institutes of Health Research Advisory Board for the Institute of Human Development, Child and Youth Health

2011-2012 Chair, Academic Board

## ***Michael McGillion***

2010 - 2011 Chair, University of Toronto Interfaculty Pain Curriculum Management Group and Curriculum Committee

## ***Katherine McGilton***

2009- Present Executive Committee, Canadian Association of Gerontology

2007-Present Board of Directors, National Initiative for Care of the Elderly (NICE)

2011 Divisional Chair, Health and Biological Division, Canadian Association of Gerontology (CAG)

2011 Chair, Curriculum Committee for Undergraduate Education in Gerontology, National Initiative for the Care of the Elderly (NICE)

## ***Elizabeth Peter***

2011-Present Academic Board

## ***Sioban Nelson***

2009 - Present Founding co-chair, History Section, International Council of Nurses

2011 - Present Member, Canadian Nurses Association's National Expert Commission

# Research Grants

---

## *Canadian Institutes of Health Research (CIHR)*

### Operating Grants Competitions

Title: The efficacy, cost-effectiveness and ecological impact of selective decontamination of the digestive tract in critically ill patients treated in the intensive care unit (The SuDDICU study).  
Phase 2: an exploratory study of the perceived risks, benefits and barriers to the use of SDD in Canadian critical care units.

Investigators: Cuthbertson, B., Burns, F., Cook, D., Dodek, P., Ferguson, N., Francis, J., Grimshaw, J., Hall, R., Johnston, B., Kanji, S., Marshall, J., McIntyre, L., Muscedere, J., Pagliarello, G., Rose, L., Webster, F., & Weijer, C.

Agency: Canadian Institutes of Health Research

Start & Finish Date: 2010-2012

Amount: \$120,195

Title: Safety at home: A pan Canadian home care safety study

Investigators: *Doran, D.M.*; Blais, R., Baker, G.R., Dill, D., Donaldson, S., Droppo, L., Eastey, A., Elliot, K., Grunier, A., Harrison, M.B., Heckman, G.A., Hirdes, J.P., Lacroix, H., Lang, A., Macdonald, M., Mitchell, L., Morrissey, T., O'Beirne, M., Sales, A., Sears, N.A., Stevenson, R. L., Storch, J.L., & White, N.

Agency: Canadian Patient Safety Institute, Canadian Institutes of Health Research, Canadian Health Services Research Foundation, Ontario Change Foundation,

Start & Finish Date: 2010 –2012

Amount per year: \$1,100,000

Title: Effects of social housing on adult and child mental health: a prospective study in the GTA west.

Investigators: Dunn, J. & *Muntaner, C.*

Agency: Canadian Institutes of Health Research

Start & Finish Date: 2010-2014

Amount: \$250,000

Title: LPT2 (Labour Position Trial 2)

Investigators: *Hodnett, E., Stremler, R., Willan, A., Halpern, S., & Windrim, R.*

Agency: Canadian Institutes of Health Research

Start & Finish Date: 2010-2012

Amount: \$100,000

Title: Social aetiology of mental disorders

Investigators: McKenzie, K. & *Muntaner, C.*

Agency: Canadian Institutes of Health Research

Start & Finish Date: 2010-2013

Amount: \$ 200,000

Title: Psychological morbidity associated with two sedation strategies in the critically-ill.  
Investigators: Mehta, S., Hunter, J., Rose, L., Maunder, R., Fergusson, N., Ethier, C., Steinberg, M., Burry, L., & Cook, D.  
Agency: Canadian Institutes of Health Research  
Start & Finish Date: 2010-2012  
Amount: \$ 63,494

Title: Participatory democracy in health care  
Investigators: *Muntaner, C.*  
Agency: Canadian Institutes of Health Research  
Start & Finish Date: 2010-2012  
Amount: \$ 25,000

Title: Sustainability of a multidimensional knowledge translation initiative for procedural pain in children.  
Investigator: *Stevens, B.*  
Agency: Canadian Institutes of Health Research  
Start & Finish Date: 2010-2014  
Amount: \$822,401

Title: New mothers in a new country: Understanding postpartum depression among recent immigrant and Canadian-born Chinese women  
Investigators: *Dennis, C-L., Noh, S., Grigoriadis, S., Stewart, D., Gagnon, A., & Fung, K.*  
Agency: Canadian Institutes of Health Research  
Start & Finish Date: 2010-2014  
Amount: \$557,208

Title: Nursing research database resource  
Investigators: *Doran, D.M., & Baumann, A.*  
Agency: Ontario Ministry of Health  
Start & Finish Date: 2010- 2012  
Amount: \$500,000

Title: The STAR (Sleep troubles and relationship to perinatal outcomes) study  
Investigators: *Stremmler, R., Dennis, C-L., Hodnett, E., Lee, K., Morin, Murray, B., Pullenayegum, E., Ryan, C., & Windrim, R.*  
Agency: Canadian Institutes of Health Research  
Start & Finish Date: 2010-2012  
Amount: \$199,948

# ***Canadian Institutes of Health Research (CIHR)***

## **Strategic Funding**

Title: Better nights, better days

Investigators: Corkum, P., Reid, G., *Stremler, R.*, Witmans, M., Weiss, S., Godbout, R., Greuber, R., & Chambers, C.

Agency: Canadian Institutes of Health Research Team Grants: Sleep and Circadian Rhythms

Start & Finish Date: 2010-2015

Amount: \$ 400,000

Title: Perinatal health equity for women on the move

Investigators: Gagnon, A.; Carnevale, F., Cleveland, J., *Dennis, C-L.*, Small, R., & Zeitlin, J.

Agency: Canadian Institutes of Health Research (Programmatic grants to tackle health and health equity)

Start & Finish Date: 2011

Amount: \$15,000

Title: MPD grant for national symposium on the clinician scientist

Investigator: *Stevens, B.*

Agency: Canadian Institutes of Health Research: Meetings, Planning and Dissemination Grant

Start & Finish Date: 2010

Amount: \$7,500

Title: Outcomes of Critically Ill Patients Presenting to Canadian Emergency Departments.

Investigators: *Rose, L.*, Lee, J.S., Atzema, C., Rubinfeld, G., Scales, D., Gray, S., & Burns, K.

Agency: Canadian Institutes of Health Research Partnerships for Health Services Improvement

Start & Finish Date: 2010-2012

Amount per year: \$172,451

Title: MPD grant for national symposium on the clinician scientist

Investigators: *Stevens, B.*, Burrows, G., Atkinson, S., & Riahi, S.

Agency: Canadian Institutes of Health Research

Start & Finish Date: 2010

Amount: \$7,500

Title: Trans-disciplinary team in sleep research and training

Investigators: Horner, R., Belsham, D., Bradley, T.D., Frankland, P., Josselyn, S., Orser, B., Peever, J., Ralph, M., Sessle, B., & *Stremler, R.*

Agency: Canadian Institutes of Health Research Team Grants: Sleep and Circadian Rhythms

Start & Finish Date: 2010-2015

Amount per year: \$ 400,000

## ***Other Research Grant Competitions***

Title: Systematic review of daily sedation interruption versus no daily sedation interruption for critically ill adult patients requiring mechanical ventilation.

Investigators: Burry, L., Rose, L., McCullagh, I., Ferguson, D., Ferguson, N., & Mehta, S.

Agency: Canadian Society of Hospital Pharmacists

Start & Finish Date: 2011-2012

Amount: \$3,500

Title: The phenomics and genomics of clinically relevant chronic post-surgical pain

Investigators: Clarke, H., Seltzer, Z., Choiniere, M., Djaiani, G., Paterson, A., Roa, V., McGillion, M., Hunter, J., Watt-Watson, J., Beatti, S., & Katz, J.

Agency: Physicians Services Incorporated

Start & Finish Date: 2010 –2012

Amount: \$ 85,000

Title: 'Migrant-friendly' maternity nursing care and perinatal outcomes

Investigators: Gagnon, A., Dennis, C-L., et al. collaborators

Agency: Centre Métropolis du Québec - Immigration et Métropoles

Start & Finish Date: Fall 2010

Amount: \$20,000

Title: Labor market policies and the reduction of health inequalities

Investigator: Muntaner, C. & Schrecker, T.

Agency: Population Health Improvement Research Network from the Ontario Ministry of Health and Long-Term Care

Start & Finish Date: 2010-2011

Amount: \$ 65,000

Title: Analisis of the Encuesta Nacional sobre las condiciones de Empleo Trabajo y Salud

Investigator: Muntaner, C

Agency: Ministerio de Salud of the Republic of Chile

Start & Finish Date: 2010-2011

Amount: \$ 200,000

Title: Evaluation of the effectiveness of genetic testing for BRCA1 and BRCA2

Investigators: Narod, S. & Metcalfe, K.

Agency: Association of Fundraising Professionals Innovation Fund

Start & Finish Date: 2010-2011

Amount: \$29,460

Title: Survey of nurse attitudes to the conduct of critical care.  
Investigators: Smith, O., Rose, L., Dale, C., & Mehta, S.  
Agency: Canadian Critical Care Research Coordinators Group  
Start & Finish Date: 2011 -2012  
Amount per year: \$2,500

Title: Social support intervention for Sudanese and Zimbabwean refugee new parents  
Investigators: Stewart, M., Makwarimba, E., Kushner, K., Letourneau, N., Shizha, E., Dennis, C-L., & Siziba, D.  
Agency: *Social Sciences and Humanities Research Council*  
Start & Finish Date: 2010  
Amount: \$234, 571

Title: Structures and processes of home care nursing for post-acute home care clients  
Investigators: *Tourangeau, A.*; Baumann, A., & Clarke, S.  
Agency: Ontario Ministry of Health & Long-term Care  
Start & Finish Date: 2010 –2012  
Amount: \$40,000

Title: Women’s decisions about anti-depressant use in pregnancy  
Investigators: Vigod, S., Grigoriadis, S., *Dennis, C-L*, Meschino, D., & Stewart, D.  
Agency: Ministry of Health and Long- Term Care (Innovation Fund Provincial Oversight Committee)  
Start & Finish Date: 2010  
Amount: \$30,000

Title: Is the grass still greener? Examining trends in Canada to US nurse migration  
Investigators: *McGillis Hall, L.*, Jones, C. B., Pink, G. H., Leatt, P., Gates, M. & *Peterson, J.*  
Agency: Ontario Health Human Resources Research Network (OHRRN)  
Start & Finish Date: 2010  
Amount: \$25,000

Title: Health improvement project for teen parents (HIP Teen Parents): An integrative approach to HIV prevention with black adolescent mothers and fathers  
Investigators: *Nelson, L. E.*, Comfort, M., & Boyer, C.,  
Agency: University of California San Francisco, Center for AIDS Prevention Studies  
Start & Finish Date: 2010 - 2011  
Amount per year: \$25,000

Title: Mapping the relationship between religiosity and HIV risk among black gay men  
Investigators: *Nelson, L. E.*, & Mayer, K. H.  
Agency: U.S. HIV Prevention Trials Network and National Institute of Allergy & Infectious Diseases  
Start & Finish Date: 2010 - 2011  
Amount per year: \$42,145

Title: Effectiveness of a baby-friendly hospital-based mothers' support group, and a cell-phone based peer support program in supporting exclusive breastfeeding in an urban Kenyan community: A pilot study

Investigators: Sellen, D., & Kamau-Mbuthia, E., Mbugua, S., Lou, L., Webb, A., Aidam, B.,  
*Dennis, C-L., & Nommsen-Rivers, L.*

Agency: Alive and Thrive Small Grants Program

Start & Finish: 2010-2011

Amount: \$98,602

Title: Toward a national report in nursing: A knowledge synthesis

Investigators: *Doran, D.M., Mildon, B., & Clarke, S.*

Agency: Academy of Canadian Executive Nurses

Start & Finish Date: Dec 2010 – Mar 2011

Amount per year: \$5,200

# Faculty Publications

---

## *Journals/Periodicals*

Aiken, L.H., Sloane, D.M., Cimiotti, J.P., Clarke, S.P., Flynn, L., Seago, J.A., Spetz, J., & Smith, H.L. (2010). Implications of the California nurse staffing mandate for other states. *Health Services Research, 45*(4), 904-921.

Almost, J., Doran, D.M., McGillis Hall, L., Spence Laschinger, H.K. (2010) Antecedents and consequences of intra-group conflict among nurses. *Journal of Nursing Management 18*(8): 981-992.

Benach, J., Castedo, A., Solar, O., Martínez, J.M., Vergara, M., Amable, M., Buxó, M., Demiral, Y., & Muntaner, C. (2010). Methods for the study of employment relations and health inequalities in a global context, *International Journal of Health Services, 40*(2), 209 – 213.

Benach, J., Solar, O., Santana, V., Castedo, A., Chung, H., & Muntaner, C. (2010). A micro-level model of employment relations and health inequalities, *International Journal of Health Services, 40*(2), 223–227.

Benach, J., Solar, O., Vergara, M., Vanroelen, C., Santana, V., Castedo, A., Ramos, J., & Muntaner, C. (2010). Six employment conditions and health inequalities: A descriptive overview, *International Journal of Health Services, 40*(2), 269 – 280.

Benach, J., Muntaner, C., Chung, H., & Benavides, F. G. (2010). Immigration, employment relations, and health: Developing a research agenda. *American Journal of Industrial Medicine, 53*(4), 338-343.

Benach, J., Muntaner, C., Santana, V., Chatterjee, M., Friel, S., & Marmot, M. (2010). Employment and working conditions and inequalities in health: A global analysis. *British Medical Journal (BMJ), 340*, 2154-2160.

Benach, J., Muntaner, C., Solar, O., Santana, V., & Quinlan, M. (2010). Conclusions and recommendations for the study of employment relations and health inequalities. *International Journal of Health Services, 40*(2), 315 – 322.

Benach, J., Muntaner, C., Solar, O., Santana, V., & Quinlan, M. (2010). The role of employment relations in reducing health inequalities. Introduction to the WHO commission on social determinants of health employment condition network (EMCONET) study. *International Journal of Health Services, 40*(2), 195-207.

Bender, A., Andrews, G., & Peter, E. (2010). Displacement and tuberculosis: Recognition in nursing care. *Health & Place, 16*, 1069-1076.

- Borrell, C., Muntaner, C., Gil-Gonzalez, D. et al. (2010). Perceived discrimination and health by gender, social class, and country of birth in a Southern European country. *Preventative Medicine*, 50(1-2), 86-92.
- Brown, S., Osann, K., Culver, J., MacDonald, D., Sand, S., Thornton, A., Brown, D. Metcalfe, K., Burke, H., Robson, M., Grant, M., & Weitzel, J. (2010). Health literacy, numeracy, and interpretation of graphical breast cancer risk estimates. *Patient Education and Counselling*, 83(1), 92-98.
- Brydges, R., Carnahan, H., Rose, D., Regehr, G., Rose, L., & Dubrowski, A. (2010) Coordinating progressive levels of simulation fidelity to maximize educational benefit. *Academic Medicine*, 85, 806-812.
- Caban, A.J., Lee, D.J., Goodman, E., Davila, E.P., Fleming, L.E., LeBlanc, W.G., Arheart, K.L., McCollister, K.E., Christ, S.L., Zimmerman, F.J., Muntaner, C., & Hollenbeck, J.A. (2011). Health indicators among unemployed and employed young adults. *Journal of Occupational and Environmental Medicine*, 53 (2), 196-203.
- Chung, H., & Muntaner, C., & Benach, J. (2010). Employment conditions and global health: A typological study of world labor markets. *International Journal of Health Services*, 40(2), 229 – 253.
- Clarke, S.P., McRae, M., Del Signore, S., Schubert, M., & Styra, R. (2010). Delirium in the elderly cardiac surgery patient: Directions for practice. *Journal of Gerontological Nursing*, 36(11), 34-45.
- Culver, J., MacDonald, J., Thornton, A., Sand, S., Grant, M., Bowen, D., Burke, H., Garcia, N., Metcalfe, K, & Weitzel, J. (2010). Development and evaluation of a decision aid for BRCA carriers with breast cancer. *Journal of Genetic Counseling*, 20 (3), 294-307.
- Davila, E.P., Christ, S.L., Caban-Martinez, A.J., Lee, D.J., Arheart, K.L., LeBlanc, W.G., McCollister K.E., Clarke, T., Zimmerman, F., Goodman, E., Muntaner, C., & Fleming, L.E. (2010). Young adults, mortality, and employment. *Journal of Occupation and Environmental Medicine*, 52 (5), 501-504.
- Delp, L., Wallace, S.P., Geiger-Brown, J., & Muntaner, C. (2010, Aug). Job stress and job satisfaction: Home care workers in a consumer-directed model of care. *Health Services Research*, 45(4), 922-940.
- Doucet, S., Jones, I., Letourneau, N., Dennis, C-L., & Robertson-Blackmore, E. (2010). Interventions for the prevention and treatment of postpartum psychosis: A systematic review. *Archives of Women's Mental Health*, 14(2), 89-98.

- Espelt, A., Borrell, C., Rodr -guez-Sanz, M., Muntaner, C., Pasar -n, M., Benach, J., Schaap, M., Kunst, A., & Navarro, V. (2010). Answer to the commentary: Politics and public health—some conceptual considerations concerning welfare state characteristics and public health outcomes. *International Journal of Epidemiology*, 39(2), 630-634.
- Fung, K., & Dennis, C-L. (2010). Postpartum depression among immigrant women. *Current Opinion in Psychiatry*, 23, 342-348.
- Gastaldo, D., Magalhes, L., Gomes, F., & Carrasco, C. (2011). The social determinants of undocumented immigrants' health. *Journal of Immigrant Minority Health*, 12:132–151.
- Gifford, W., Davies, B., Tourangeau, A E., & Lefebvre, N. (2011). A leadership intervention to facilitate staff utilization of research-based guidelines to improve home health care. *Journal of Nursing Management*, 19, 121-132.
- Harrison, D., Bueno, M., Yamada, J., Adams-Webber, T., & Stevens, B. (2010). Analgesic effects of sweet tasting solutions in infants: Current state of equipoise. *Pediatrics*, 126(5), 894-902.
- Harrison, D., Stevens, B., Bueno, M., Yamada, J., Adams-Webber, T., Beyene, J., & Ohlsson, A. (2010). Efficacy of sweet solutions for analgesia in infants between one and 12 months of age: A systematic review. *Archives of Disease in Childhood*, 95(6), 406-413.
- Harrison, D., Yamada, J., & Stevens, B. (2010) Strategies for the prevention and management of neonatal and infant pain. *Current Pain and Headache Reports*, 14(2), 112-123.
- Hodnett E., Downe, S, Walsh, D., & Weston, J. (2010). Alternative versus conventional institutional settings for birth. *Cochrane Review*, The Cochrane Library, 9. Art. No: CD000012.pub3.
- Hodnett E., Fredericks, S., & Weston, J. (2010). Support for women at risk of low birthweight babies. *Cochrane Review*, The Cochrane Library, 6. Art. No: CD000198.pub2.
- Hodnett, E., Gates, S., Hofmeyr, J., Sakala, C., & Weston, J. (2011). Continuous support for women during childbirth. *Cochrane Review*, The Cochrane Library. 2. Art. No: CD003766.pub3.
- Horton, R., Din Osmun, L., Pillai Riddell, R., Stevens, B., Greenberg, S. (2010). Maternal relationship style, pediatric health care utilization and infant health. *Paediatrics & Child Health*, 15(7), 432-436.
- Jung, M., & Muntaner, C., & Choi, M. (2010). Factors related to perceived life satisfaction among the elderly in South Korea. *Journal of Preventive Medicine and Public Health*, 43(4), 292-300.
- Kavanagh, P., Stevens, B., Sears, K., Sidani, S., & Watt Watson, J. (2010). Process evaluation of Appreciative Inquiry to translate pain evidence into pediatric nursing practice. *Implementation Science*, 5, 90.

- Kim, I.H., Khang, Y.H., Cho, S.I., Chun, H., & Muntaner, C. (2011). Gender, professional and non-professional work, and the changing pattern of employment-related inequality in poor self-rated health, 1995-2006 in South Korea. *Journal of Preventive Medicine and Public Health*, 44(1), 22-31.
- Kim, I.H., Geiger-Brown, J., Trinkoff, A., & Muntaner, C. (2010). Physically demanding workloads and the risks of musculoskeletal disorders in homecare workers in the USA. *Health and Social Care in the Community*, 18(5), 445-455.
- Kim, I.H., Muntaner, C., Chung, H., & Benach, J. (2010). Studies on employment-related health inequalities in countries representing different types of labor markets. *International Journal of Health Services*, 40(2), 255 – 267.
- Letourneau, N., Duffett-Leger, L., Dennis, C-L., Stewart, M., & Tryphanopoulos, P. (2011). Identifying the support needs of fathers affected by postpartum depression: A pilot study. *Journal of Psychiatric and Mental Health Nursing*, 18, 41-47.
- McGibbon, E., Peter, E., & Gallop, R. (2010). An institutional ethnography of nurses' stress. *Qualitative Health Research*, 20, 1353-1378.
- McGillion, M., Cook, A., Victor, J.C., Carroll, S., Weston, J., Teoh, K., & Arthur, H. (2010). Effectiveness of percutaneous laser revascularization therapy for refractory angina. *Vascular Health and Risk Management*, 6, 735 – 747.
- McGillis Hall, L., Ferguson-Paré, M., Peter, E., White, D., Besner, J., Chisholm, A., Ferris, E., Fryers, M., MacLeod, M., Mildon, B., Pedersen, C. & Hemingway, A. (2010). Going blank: Factors contributing to interruptions to nurses' work and related outcomes. *Journal of Nursing Management*, 18, 1040-1047.
- McGillis Hall, L., Petersen, C., & Fairley, L. (2010). Losing the moment: Understanding interruptions to nurses' work. *Journal of Nursing Administration*, 40 (4), 169-176.
- McGilton, K.S. (2010). Development and psychometric testing of the supportive supervisory scale (SSS). *Journal of Nursing Scholarship* 42(2), 223-232.
- McGilton, K.S., Sorin-Peters, R., Boscart, V., Sidani, S., Rochon, E., & Fox, M. (2010) Focus on communication: Enhancing the odds of successful nurse-patient interactions. *International Journal of Older People Nursing*, 5, (3), 101-107.
- McQueen, K., Dennis, C-L., Stremler, R., & Norman, C. (2011). A pilot randomized controlled trial of a breastfeeding self-efficacy intervention with primiparous mothers. *Journal of Obstetric, Gynecologic, and Neonatal Nursing*, 40, 35-46.

- Metcalfe, K., Poll, A., Nanda, S., Royer, R., Llacuachaqui, M., Tulman, A., Sun, P., and Narod, S. (2010). Satisfaction, breast cancer risk perception, and cancer-related distress in unselected Jewish women undergoing genetic testing for BRCA1 and BRCA2. *Clinical Genetics*, 78(5), 411-7.
- Metcalfe, K., Lubinski, J., Lynch, H., Ghadirian, P., Foulkes, W., Kim-Sing, C., Neuhausen, S., Tung, N., Rosen, B., Gronwald, J., Ainsworth, P., Sweet, K., Eisen, A., Sun, P., Narod, S. (2010). Family history of cancer and the risk of cancer in women with a BRCA1 or BRCA2 mutation. *Journal of the National Cancer Institute* . 102(24), 1874-8.
- Metcalfe, K, Lynch, H, Ghadirian, P, Tung, N, Olivotto, I, Foulkes, W, Warner, E, Olopade, O, Eisen, A, Weber, B, McLennan, J, Sun, P, & Narod, S. (2010). Ipsilateral breast cancer risks in women with a BRCA1 or BRCA2 mutation. *Breast Cancer Research and Treatment*, 127 (1):287-96.
- Muraca, L., Leung, D., Clark, A., Beduz, M.A., & Goodwin, P. (2010). Breast cancer survivors: Taking charge of lifestyle choices after treatment. *European Journal of Oncology Nursing*, 3 (3), 250-3.
- Muntaner, C., Chung, H., Solar, O., Santana, V., Castedo, A., & Benach, J. (2010). A macro-level model of employment relations and health inequalities. *International Journal of Health Services*, 40(2), 215–221.
- Muntaner, C., Li, Y., Ng, E., Benach, J., & Chung, H. (2011). Work or place? Assessing the concurrent effects of workplace exploitation and area-of-residence economic inequality on individual health. *International Journal of Health Services*, 41(1), 27-50.
- Muntaner, C., Borrell, C., Vanroelen, C., Chung, H., Benach, J., Kim, I.H., & Ng, E. (2010). Employment relations, social class and health: A review and analysis of conceptual and measurement alternatives. *Social Science and Medicine*, 71(12), 2130-2140.
- Muntaner, C., Solar, O., Vanroelen, C., Martínez, J.M., Vergara, M., Santana, V., Castedo, A., Kim, I.L., & Benach, J. (2010). Unemployment, informal work, precarious employment, child labor, slavery, and health inequalities: pathways and mechanisms. *International Journal of Health Services*, 40(2), 281 – 295.
- Muntaner, C., Sridharan, S., Chung, H., Solar, O., Quinlan, M., Vergara, M., & Benach, J. (2010). The solution space: developing research and policy agendas to eliminate employment-related health inequalities *International Journal of Health Services*, 40(2), 309 – 314.
- O'Brien-Pallas, L., Meyer, R. M., Wang, S., & Hayes, L. (2011). The patient care delivery model - an open system framework: Conceptualization, literature review and analytical strategy. *Journal of Clinical Nursing*, 20(11-12), 1640-1650.

- Olds, D.M., & Clarke, S.P. (2010). The effect of work hours on adverse events and errors in health care. *Journal of Safety Research*, 41(2), 153-162.
- Padhila, M.I., & Nelson, S. (2011). Networks of Identity: The Potential of Biographical Studies for Teaching Nursing History. *Nursing History Review*. 19, 183-93.
- Parry, M., Watt-Watson, J., Hodnett, E., Tranmer, J., Dennis, C.L., & Brooks, D. (2010). Pain experiences of men and women after coronary artery bypass graft (CABG) surgery. *Journal of Cardiovascular Nursing*, 25 (3), e9-e15.
- Poochikian-Sarkissian, S., Sidani, S., Ferguson-Paré, M., & Doran, D. (2010). Examining the relationship between patient-centred care and outcomes. *Canadian Journal of Neuroscience Nursing* 32(4): 14-21.
- Poghosyan, L., Clarke, S.P., Finlayson, M., & Aiken, L.H. (2010). Nurse burnout and quality of care: Cross-national investigation in six countries. *Research in Nursing and Health*, 33(4), 288-98.
- Pollock, W., Rose, L., & Dennis, C-L. (2010). Pregnant and postpartum admissions to the intensive care unit: A systematic review. *Intensive Care Medicine*, 36, 1465-1474.
- Puts, M.T.E., Monette, J., Girre, V., Monette, M., Batist, G., Wolfson, C., & Bergman, H. (2010). Characteristics of older newly-diagnosed cancer patients refusing cancer treatment. *Supportive Care in Cancer*, 18(8), 969-974.
- Puts, M.T.E., Monette, J., Girre, V., Monette, M., Batist, G., Wolfson, C & Bergman, H. (2010). Does frailty predict hospitalization, emergency room visits and visits to the general practitioner in older newly-diagnosed cancer patients? *Critical Reviews in Oncology/Hematology*, 76, 142-151.
- Puts, M.T.E., Monette, J., Girre, V., Costa-Lima, B., Batist, G., Wolfson, C., & Bergman, H. (2010). How common are potential medication problems during cancer treatment in older newly-diagnosed cancer patients? *Drugs & Aging*, 468, 1869-1993.
- Puts, M.T.E., Monette, J., Girre, V., Pepe, C., Monette, M., Assouline, S., Panasci, L., Basik, M., Batist, G., Wolfson, C., & Bergman, H. (2011). Are frailty markers useful for predicting adverse outcomes in older newly-diagnosed cancer patients? *Critical Reviews in Oncology/Hematology*, 78, 138-149.
- Puts, M.T.E., Monette, J., Girre, V., Wolfson, C., Monette, M., Batist, G., & Bergman, H. (2011). Changes in functional status in older newly-diagnosed cancer patients during cancer treatment during a six month follow-up period. Results of a prospective pilot study. *Journal of Geriatric Oncology*. 2(2), 112-120.

- Puts, M.T.E., Monette, J., Girre, V., Wolfson, C., Monette, M., Batist, G., & Bergman, H. (2011). Quality of life during cancer treatment in older newly-diagnosed cancer patients during cancer treatment during a one-year follow-up period. Results of a prospective pilot study. *Annals of Oncology*, 22(4), 916-923.
- Quinlan, M., Muntaner, C., Solar, O., Vergara, M., Eijkemans, G., Santana, V., Chung, H., Castedo, A., & Benach, J. (2010). Interventions on employment relations and health inequalities. *International Journal of Health Services*, 40(2), 297 – 307.
- Rocheffort, C.M., & Clarke, S.P. (2010). Nurses' work environments, care rationing, job outcomes, and quality of care on neonatal units. *Journal of Advanced Nursing*, 66(10), 2213–2224.
- Rose, D., Peter, E., Angus, J. & Gallop, R. (2011). Respect in forensic psychiatric nurse-patient relationships: A practical compromise. *Journal of Forensic Nursing*, 7, 3-16.
- Rose, L. Blackwood, B., Burns, S.M., Frazier, S. K., & Egerod, I. (2011). International perspective of nurses' role in the management of weaning from mechanical ventilation. *American Journal of Critical Care*, 20(1), e118-e126.
- Rose, L. (2011) Interprofessional collaboration. How to define? *Nursing in Critical Care*, 16(1): 5-10.
- Rose, L., Baldwin, I, Crawford, T., & Parke, R. (2010). A multicenter observational study of semirecumbent positioning in mechanically ventilated patients. *American Journal of Critical Care*, 19(6), e100-e108.
- Rose, L., Baldwin, & I, Crawford, T. (2010). The use of bed-dials to maintain recumbent positioning for critically ill mechanically ventilated patients (The RECUMBENT study): Multicentre before and after observational study. *International Journal of Nursing Studies*, 47(11), 1425-1431.
- Rose, L., & Clarke, S.P. (2010). Vital signs - No longer a priority? *American Journal of Nursing*, 110(5), 11.
- Rose, L. (2010). Clinical application of ventilation modes: Ventilatory strategies for lung protection. *Australian Critical Care*, 23(2), 71-80.
- Rose, L., Haslam, L., Dale, C., Knechtel, L., Fraser, M., Pinto, R., McGillion, M, & Watt-Watson J. (2011). Survey of assessment and management of pain for critically ill adults. *Intensive and Critical Care Nursing*, 27, 121 – 128.
- Rose, L., & Fraser, I. (2010). Demographics and outcomes of a regional weaning centre, Canada. *Critical Care Medicine*. 38(12): 102.

- Ross, L., McQueen, K., Vigod, S., & Dennis, C-L. (2011). Risk for postpartum depression associated with assisted reproductive technologies and multiple births: A systematic review. *Human Reproduction Update*, 17, 96-106.
- Ross, L., Villegas, L., Dennis, C-L., Bourgeault, I., Cairney, J., Grigoriadis, S., Steele, L., & Yudin, M. (2011). Rural residence and risk for perinatal depression: A Canadian pilot study. *Archives of Women's Mental Health*, 14(3), 175-185.
- Sellström, E., O'Campo, P., Muntaner, C., Arnoldsson, G., & Hjern, A. (2011). Hospital admissions of young persons for illicit drug use or abuse: does neighborhood of residence matter? *Health Place*, 17(2), 551-7.
- Sidani, S., & Doran, D. (2010). Relationships between processes and outcomes of nurse practitioners in acute care: An exploration. *Journal of Nursing Care Quality*, 25(1): 31-38.
- Sorin-Peters, R., McGilton, K.S., & Rochon, E. (2010). The development and evaluation of a communication training program for nurses working with persons with aphasia/stroke in a long-term care institution. *Aphasiology*, 24 (12), 1511-1536.
- Squires, M., Tourangeau, A. E., Laschinger, H. S., & Doran, D. (2010). The link between leadership and safety outcomes in hospitals. *Journal of Nursing Management*, 18, 914-925.
- Stevens, B., Abbott, L., Yamada, J. + CIHR Team in Children's Pain. (2011). Epidemiology and management of painful procedures in hospitalized children in Canada. *Canadian Medical Association Journal*, DOI:10.1503/cmaj.101341.
- Stevens, B., Johnston, C., Taddio, A., Yamada, J., Lamba, J., & Dickson, A. (2010). The premature infant pain profile (PIPP): Evaluation 13 years after development. *Clinical Journal of Pain*, 26 (9), 813-30.
- Stevens, B., McGrath, P., Ballantyne, M., Yamada, J., Dupuis, A., Gibbins, S., Beyene, J., Breau, L., Camfield, C., Franck, L., Finley, A., Howlett, A., Johnston, C., McKeever, P., O'Brien, K., & Ohlsson, A. (2010). Influence of risk of neurological impairment and procedure invasiveness on health professionals assessment and management of procedural pain in neonates. *European Journal of Pain*, 14, 735-741.
- Stevens, B., Yamada, J., & Ohlsson, A. (2010). Sucrose for analgesia in newborn infants undergoing painful procedures. *Cochrane Database of Systematic Reviews*, Issue 1. Art. No. CD001069. DOI: 10.1002/14651858.CD001069.pub3.
- Stinson, J., Stevens, B., Feldman, B., Streiner, D., McGrath, P., Dupuis, A., Petroz, G., & Gill, N. (2006). Using an electronic pain diary to better understand pain in children and adolescents with arthritis. *Pain Management*, 1(2), 127-137.

- Stinson, J., McGrath, P., Hodnett, E., Feldman, B., Duffy, C., Huber, A., Tucker, B., Hetherington, CR., Tse, S., Spiegel, L., Campillo, S., Gill, N., & White, M. (2010). An Internet-based self-management program with telephone support for adolescents with arthritis: A pilot randomized controlled trial. *The Journal of Rheumatology*, 37(9), 1944-1952.
- Stinson, J.N., McGrath, P., Hodnett, E., Feldman, B.M., Duffy, C.M., Huber, A., Tucker, L., Hetherington, R., Tse, S.M.L., Spiegel, L.R., Campillo, S., Gill, N., & White, M. (2010). Usability testing of an online self-management program for adolescents with juvenile idiopathic arthritis. *Journal of Medical Internet Research*, 12(3): e30.
- Stremmler, R., Dhukai, Z., Wong, L., & Parshuram, C.S. (2011). Factors influencing sleep for parents of critically ill hospitalized children: A qualitative analysis. *Intensive and Critical Care Nursing*, 27, 37-45.
- Suominen, T., Harkonen, E., Rankinen, S., Kuokkanen, L., Kukkurainen, M. & Doran, D. (2011). Perceived organizational change and its connection to the work-related empowerment. *Nursing Science*. 99, 31(1): 4–9.
- Tourangeau, A. E., Cranley, L., Laschinger, H. S., & Pachis, J. (2010). Relationships among leadership practices, work environments, staff communication and outcomes in long-term care. *Journal of Nursing Management*, 18, 1060-1072.
- Tourangeau, A. E., Squires, M. E., Wodchis, W., McGilton, K., Teare, G., & Widger, K. (2011). Post-acute stroke patient outcomes in Ontario, Canada complex continuing care settings. *Disability and Rehabilitation*, 33(2), 98-104.
- Tsimicalis, A., Stevens, B., Ungar, W., McKeever, P., & Greenberg, M. (2011). The cost of childhood cancer from the family's perspective: A critical review. *Pediatric Blood & Cancer*, 56(5), 707-17.
- Vachon, M., Fillion, L., Achille, M., Duval, S, & Leung, D. (2011). An awakening experience: An interpretative phenomenological analysis of the effects of a meaning-centered intervention shared amongst palliative care nurses. *Qualitative Research in Psychology*, 8(1), 66-80.
- Vedel, I., Puts, M.T.E., Monette, M., Monette, J., & Bergman, H. (2011). Barriers and facilitators to breast and colorectal cancer screening of older adults in primary care: A systematic review. *Journal of Geriatric Oncology*, 2(2), 85-98.
- Vives, A., Amable, M., Ferrer, M., Moncada, S., Llorens, C., Muntaner, C., Benavides, F.G., & Benach, J. (2010). The Employment Precariousness Scale (EPRES): Psychometric properties of a new tool for epidemiological studies among waged and salaried workers. *Occupational and Environmental Medicine*, 67(8), 548-55.

Wan-Chow-Wah, D., Monette, M., Monette, M., Sourial, N., Retornaz, F., Batist, G., Puts, M.T.E., & Bergman, H. (2011). Treatment decisions regarding chemotherapy for older cancer patients: A census of cancer physicians. *Critical Reviews in Oncology/Hematology*, 78, 45-58.

Wolff, A.C., Ratner, P.A., Robinson, S.L., Oliffe, J.L., & McGillis Hall, L. (2010). Beyond generational differences: A literature review of the impact of relational diversity on nurses' attitudes and work. *Journal of Nursing Management*, 18 (8), 948-969.

Yamada, J., Stevens, B., Sidani, S., & Watt-Watson, J. (2010). Content validity of a process evaluation checklist to measure intervention implementation fidelity. *Worldviews on Evidence Based Nursing*, 7(3), 158-64.

## ***Books/Book Chapters***

Clarke, S.P. (2011). Connecting practice environments to retention and quality of care: Where next? In S. Nelson & D. Doran (eds.), *Mapping the field: Nursing scholarship in health human resources. A Festschrift in Honour of Dr Linda O'Brien Pallas* (pp. 16-37). Toronto, ON: Lawrence S. Bloomberg Faculty of Nursing, University of Toronto.

Eaton, W.W., Muntaner, C., & Sapag, J. (2010). Socioeconomic position and mental disorder. *A Handbook on the Study of Mental Health Social Contexts, Theories and Systems (2<sup>nd</sup> Edition*, pp. 226-255). Horwitz AV and Schied TL Cambridge University Press.

McGillion, M., LeFort, S. & Webber, K. & Stinson, J. (2011). Pain self-management: Theory and process for clinicians. In M. Lynch, K Graig, & P Peng (eds.), *Clinical Pain Management: A Practical Guide* (pp. 193-199). Oxford: Blackwell Publishing.

McGilton, K.S. (2011). Strengthening the role of registered nurses in long-term care: A key to quality resident care In S. Nelson & D. Doran (eds.), *Mapping the field: Nursing scholarship in health human resources. A Festschrift in Honour of Dr. Linda O'Brien Pallas* (pp. 38-53). Toronto, ON: Lawrence S. Bloomberg Faculty of Nursing, University of Toronto.

Meyer, R. M. (2011). Delving into the 'black box' of nursing work. In S. Nelson & D. Doran (eds.), *Mapping the field: Nursing scholarship in health human resources. A Festschrift in Honour of Dr Linda O'Brien Pallas* (pp. 64-104). Toronto, ON: Lawrence S. Bloomberg Faculty of Nursing, University of Toronto.

Nelson, S. (2010). The Nightingale Imperative. In S. Nelson and A.M. Rafferty (eds.). *Notes on Nightingale: The Influence and Legacy of a Nursing Icon* (pp.9-27). New York: Cornell University Press.

Nelson, S. & Doran, D. eds. (2011). *Mapping the field: Nursing scholarship in health human resources. Festschrift in honour of Dr. Linda O'Brien-Pallas*. Toronto, ON: Lawrence S. Bloomberg Faculty of Nursing, University of Toronto.

Nelson, S. & Rafferty, A.M. (eds.). (2010). *Notes on Nightingale: The Influence and Legacy of a Nursing Icon*. New York: Cornell University Press.

Peter, E. (2011). Home health care: Ethics, politics and policy. In J. Storch, P. Rodney, & R. Starzomski (eds.), *Toward a moral horizon: Nursing ethics in leadership and practice*. (2<sup>nd</sup> edition) Don Mills, ON: Pearson Education Canada.

Tourangeau, A. E. (2011). Determinants of hospital mortality rates: A tale of two studies. In S. Nelson & D. Doran (eds.), *Mapping the field: Nursing scholarship in health human resources. A Festschrift in Honour of Dr. Linda O'Brien Pallas* (pp. 105-114). Toronto, ON: Lawrence S. Bloomberg Faculty of Nursing, University of Toronto.

Wall, B. & Nelson, S. eds. (2011). Special Section: Report from the Nursing History Section at the 2009 International Council of Nurses, Durban, South Africa. *Nursing History Review*.



To download the *2010 - 2011 Bloomberg Nursing Annual Research Report* , scan the code or visit [uoft.me/FONResearchReports](http://uoft.me/FONResearchReports)